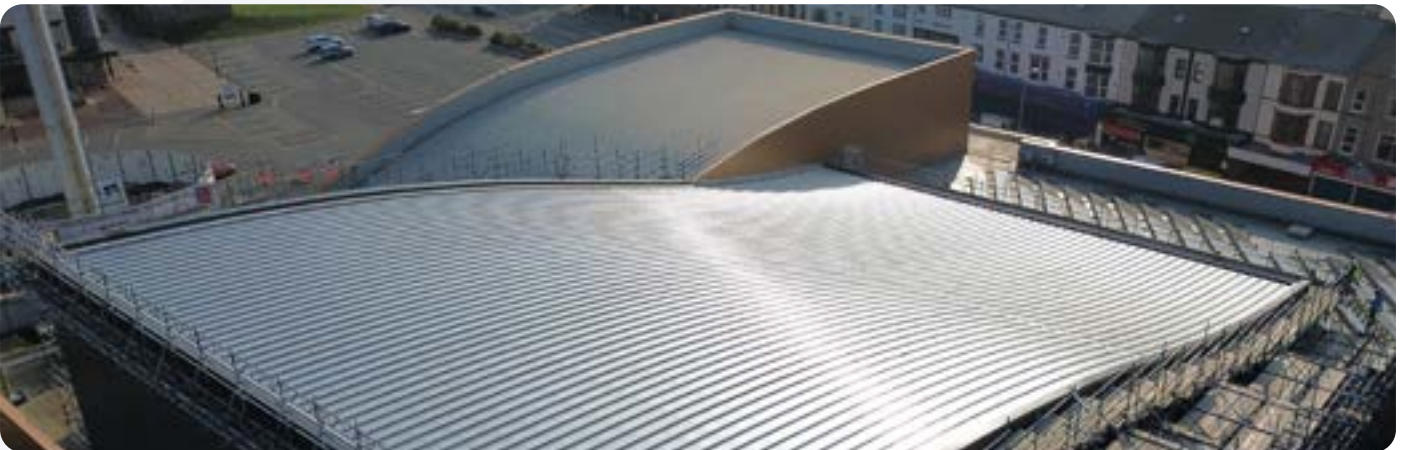


SC2 Water Park



Garland System R-MER LOC	Sector Public	Client Denbighshire County Council	Size 1,200 m²
------------------------------------	-------------------------	--	------------------------------------



Building resilience restored as popular leisure centre reopens after storm damage forced closure.

SC2 Water Park in Rhyl, a flagship leisure destination for Denbighshire County Council, faced an unexpected crisis when severe storms ripped off the original roof. With the previous manufacturer no longer trading, the Council needed an experienced, technically capable partner who could restore the site quickly and ensure it was protected for decades to come.

Already a trusted supplier to the Council, Garland UK was appointed to design and deliver a bespoke, long-term roofing solution capable of withstanding the demanding coastal environment and safeguarding this key community facility.

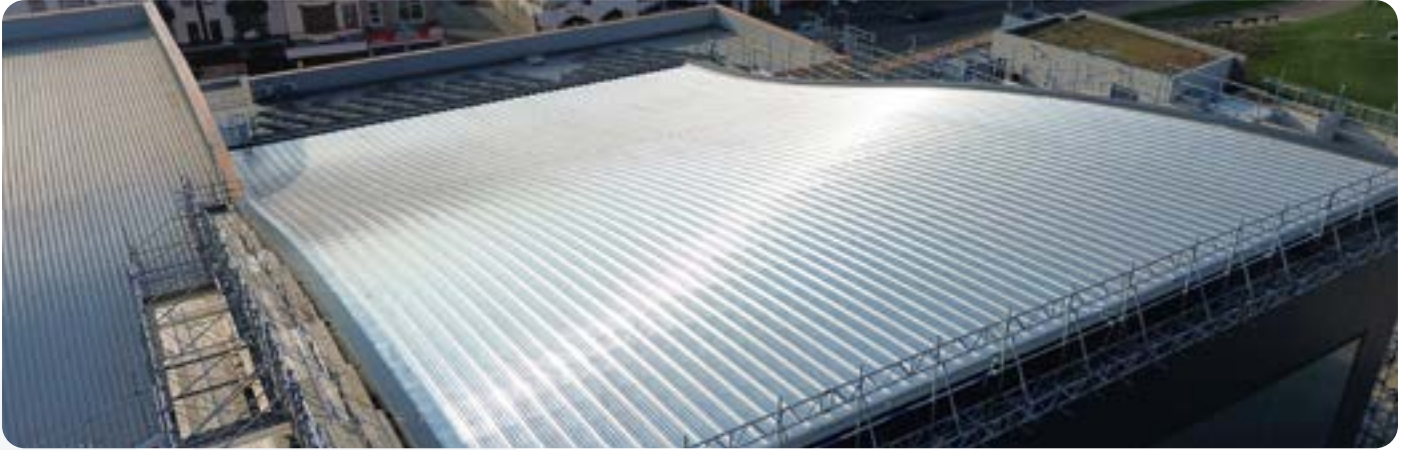


Challenge

The storm exposed critical weaknesses in the original roof design, which had failed to cope with the site's wind load demands. The closure meant immediate loss of revenue, reduced access to community leisure facilities, and growing urgency to reopen.

The replacement roof required complex engineering to match the building's 40 metre wide dual-curved structure. Standing seam sheets up to 22 metres in length had to be precision-engineered off-site, with escorted delivery, timed road closures, and careful sequencing of work.

“
The closure meant immediate loss of revenue, reduce access to community facilities, and **growing urgency to reopen**
”



With only a small car park as the site compound, storage, crane operations, and contractor access needed meticulous planning. Moisture protection for the exposed structure was critical throughout, with temporary coverings installed until the new system could be sealed.

Solution

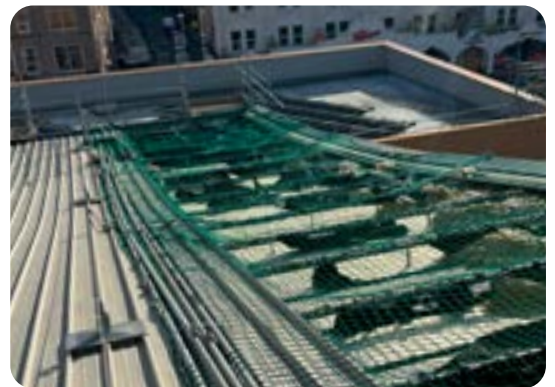
Garland UK Technical Manager Rob Wall specified the [R-MER LOC](#) standing seam metal system, designed for storm resilience, thermal efficiency, and long service life in marine climates. Its penetration-free, zip-free seam design enabled faster installation and allowed for thermal movement without panel distortion.

The system was tailored to the building's complex geometry, with 22 metre top sheet runs and 18 metre lower runs. Approved contractor, [Future Roof Leeds](#), carried out the works, reusing the existing perforated aluminium liner where possible to reduce waste and disruption.

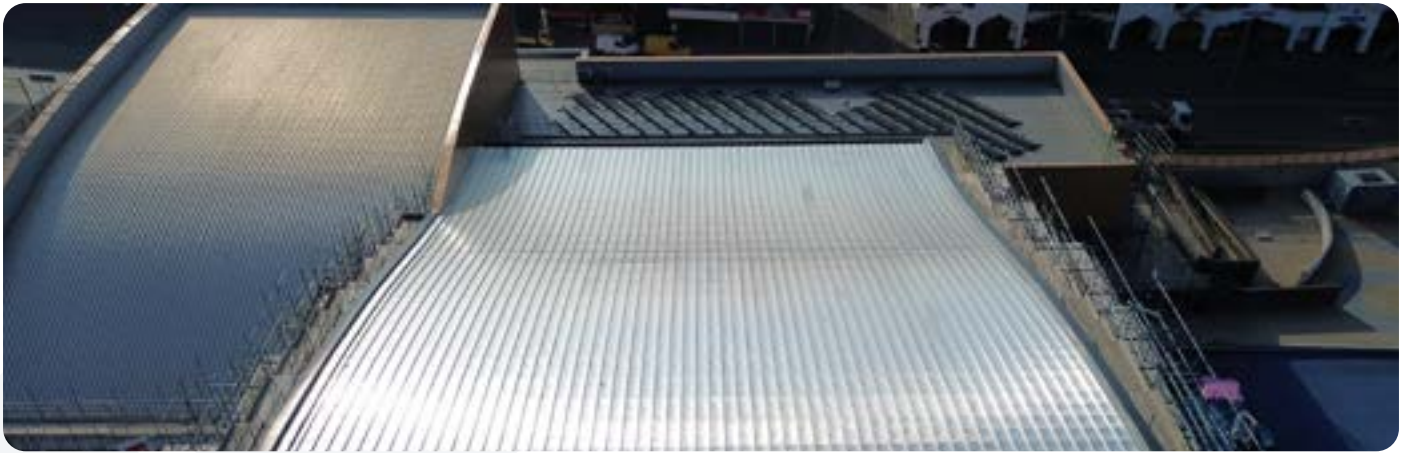
A high-performance, foil-lined vapour control layer was installed, along with upgraded insulation and a breather membrane suitable for coastal exposure. Acoustic infills were also integrated to maintain internal sound control, enhancing the original system's acoustic performance.



Before



“ Ability to address... critical issues without disrupting the school's operations. ”



Outcome

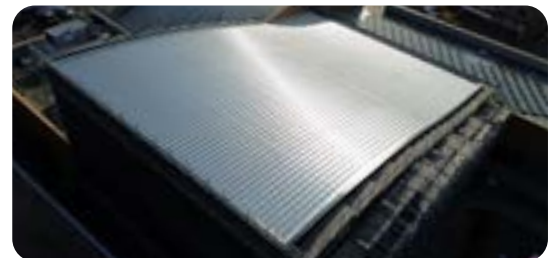
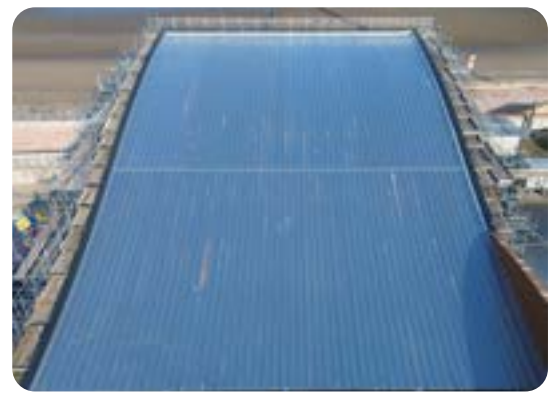
The 1,200 sqm roofing system was completed on time and within budget, restoring full functionality to SC2 Water Park and preventing further loss of income. Garland UK's Roof Asset Management Programme (RAMP) now provides the Council with a complete digital record of the project, including inspection reports, guarantees, and maintenance guidance, giving estates teams full visibility for ongoing asset care.

Covered by a 30 year Single-Point Guarantee for design, materials, and workmanship, the Council has complete assurance that any issues will be resolved swiftly, without dispute or additional cost.

The reopening of SC2 Water Park has reinstated a much-loved leisure venue for residents and visitors, supporting local wellbeing, tourism, and economic activity. The storm-resilient design means fewer disruptions and reduced maintenance, and reliable year-round availability, even in challenging weather

Robin Jones, Senior Building Surveyor at Denbighshire County Council, commented, *"The level of service from Garland UK has been first-class from start to finish. Rob and the team gave us confidence at every stage, from design to handover. The quality of the roof and the management of such a tricky site exceeded our expectations."*

Rob Wall, Technical Manager at Garland UK, added, *"This was a demanding brief in a harsh environment. The combination of curved geometry, extreme sheet lengths and complex logistics called for precision planning and strong collaboration. We're proud to have supported the Council in getting this key venue back up and running."*



“
The quality of the roof and the management of such a tricky site exceeded our expectations
”



Garland UK

Second Way Centre, Second Way, Avonmouth, Bristol, BS11 8DF

✉ contact@garlanduk.com

☎ 01174 401 050

🌐 garlanduk.com