

R-MER

Metal Roof & Wall
Waterproofing Systems





We are a market-leading manufacturer of high-quality roofing and waterproofing systems for commercial, residential, industrial and public sectors

Working in partnership with Surveyors, Architects and Facilities Managers, we deliver robust, proactive & long-term waterproofing solutions for all roofing assets.

For 20 years, our dedicated Technical Managers have developed partnerships with over 4,500 schools, NHS trusts, councils and private companies across the UK, as a single point of contact to each customer.

We offer

- ✓ New build, refurbishment and preventive maintenance solutions
- ✓ Dedicated Technical Manager throughout your project
- ✓ Complimentary rooftop survey and condition reports
- ✓ Government Grant and Funding application support
- ✓ A diverse product range including metal, modified bitumen, liquid coatings and green systems
- ✓ Bespoke specifications and detail drawings
- ✓ Cloud-based roof asset management services



I recommend Garland UK for the quality of technical advice and expertise we receive. We always get the best result for our projects.

Dave Garvey
Contracts Manager, Crown Service



R-MER

Engineered for longevity with multiple systems suitable for a wide range of applications

Our diverse range of R-MER metal roofing systems provides specifiers with a wide range of options and superior product quality that guarantees the optimum acoustic, thermal and waterproofing solution for your roof.

R-MER is the trusted system for architects and specifiers, including standing seam, composite panel, profiled cladding, and metal tile systems for assured durability and robust performance.

Each metal system offers a range of benefits to suit your project, from improving the thermal performance of your building, delivering low maintenance solutions to asbestos encapsulation and flat to pitched roof conversion options.

Why Choose an R-MER Metal System?

- ✓ High-performance long lasting waterproofing protection
- ✓ Improved thermal and acoustic performance
- ✓ Full range of systems for all roofing and facade applications
- ✓ 100% recyclable and manufactured from up to 55% recycled materials
- ✓ Diverse selection of aesthetically enhancing materials and finishes
- ✓ Compatible with Garland's Solarise PV and Green Shield extensive green roof systems

R-MER Metal System Credentials

BREEAM®

UK
CA

UKTA



Sustainable Solutions

At Garland we consider sustainability at the core of everything we do. From market leading technical expertise through to the high-performance waterproofing systems we install, we deliver long lasting sustainable solutions to protect your business for the future.

We understand that investing in a new waterproofing system for your assets can be a daunting prospect. As a manufacturer, we take pride in delivering the high-quality products and systems, backed by our market leading Single-Point Guarantees to ensure that your roof system will withstand the elements for decades to come.

Our systems are designed to last, reducing the lifecycle cost to your business and minimising the impact on the environment.

As the demand for more sustainable construction methods increases, we are proud to deliver durable systems that reduce waste, promote more efficient buildings and create pleasing environments for your buildings inhabitants.

Manufacturing process

We are continually developing our R-MER systems manufacturing processes to reduce our impact on the environment working with our customers to build a more sustainable future.

From the operation of manufacturing sites, through to our warehouse and distribution networks, we consider the complete product lifecycle to improve the way we operate in the construction market.

Sustainable systems

By offering a wide range of waterproofing systems, our Technical Manager's are able to specify the right solution for you buildings needs.

Our Green Shield extensive green roof systems are the perfect addition to any R-MER metal project, to improve thermal performance and to provide a diverse ecosystem for the local environment. To further improve your buildings efficiency, we offer Solarise PV systems, compatible with all R-MER metal systems.





SOLARISE

Applications

R-MER metal systems are a range of fully bespoke solutions that will meet and exceed the demands of your building's roofing requirements.

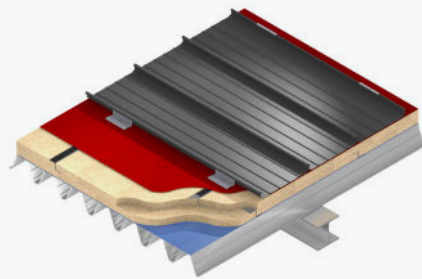
Our Technical Managers are experts in the application and specification of all R-MER metal systems and work closely with you, to tailor a solution that will resolve any design or waterproofing challenges within a clearly defined budget and project managed time-scale for delivery.

The versatility of the R-MER range makes it the ideal choice for any type of project and building type.

Built-up metal roof systems

Built-up metal roofing is the time-proven traditional system design. Incorporating a liner or deck with a spacer system, this void is filled with the most appropriate insulation for the design, then finished with the outer weathering sheet.

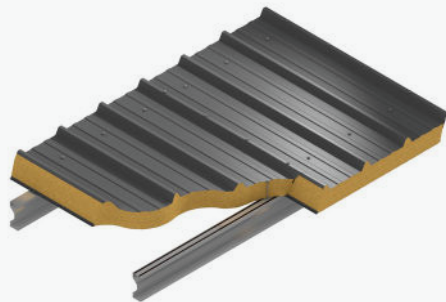
This method allows for the greatest design flexibility and control over the project, to which our R-MER LOC and CLAD systems are built by.



Composite panel systems

Composite metal roof and wall panels provide an all-in-one performance enhancing solution to improve the thermal efficiency of your buildings. With a wide range of insulation thickness's available across the R-MER Composite range, systems can be developed to meet the requirements of your building such as warehousing or commercial properties.

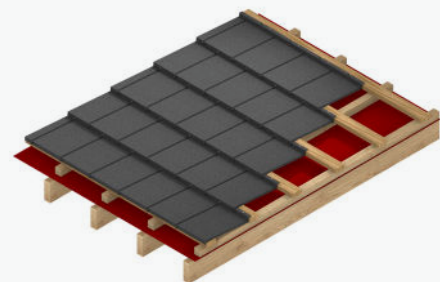
Due to the composite panel's prefabricated design, this system can be installed rapidly and without complexity.



Heritage & restoration

The TILE ST system offers the modern performance of a metal roofing profile whilst maintaining the traditional aesthetics of a typical clay tile. In addition to being able to match the most common types of roofing tile, our metal alternative provides a long lasting, highly resistant system which can be installed up to 30% faster than individual tiles.

Unlike traditional clay tiles, R-MER TILE ST protects your building for the future with a 20+20 year diminishing guarantee.



Refurbishment & replacement

When it comes to the refurbishment of failed roofing systems there are two main options for building owners; complete replacement or overlay with a new waterproofing solution. There are benefits to each approach and your Technical Manager will be able to advise on the best course of action.

The removal of failed waterproofing systems can often be an unnecessary expense and can easily be avoided. For example, the removal and disposal of failed asbestos roofing sheets is a hazardous and expensive process. Therefore, where possible the best solution would be to encapsulate the asbestos within a new metal roofing system.

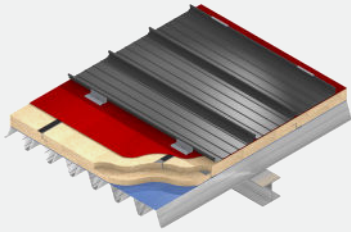
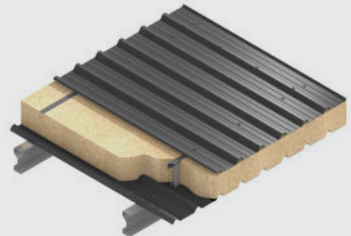
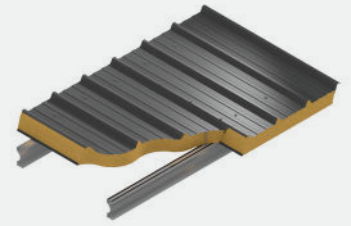
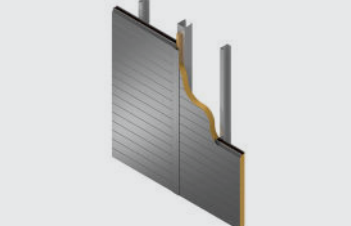
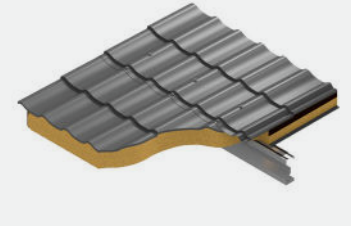
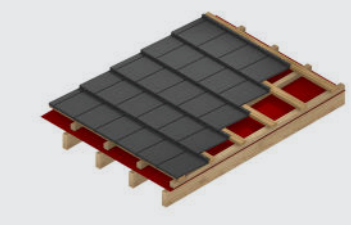
If you are looking to upgrade your roof, for example to improve the thermal performance of your waterproofing system, then we can specify a full roof replacement or an overlay of the existing roof. A roof refurbishment specification from Garland provides the perfect opportunity to improve your building's environmental impacts through the installation of a Solarise PV system or a Green Shield extensive green roof system.

During the initial roof condition survey conducted by your local technical expert, a moisture mapping survey will determine if moisture is present within the roof structure. If water ingress is identified then a full strip and replacement will be recommended due to the thermal efficiency and performance of your building being compromised.



R-MER Metal - Systems at a glance

Discover the best R-MER metal waterproofing solution for you building

System	Build Up	Features/Advantages	Applications
R-MER LOC - Standing Seam		<ul style="list-style-type: none"> • Complete design freedom • Enhanced aesthetics • Secret fix system • Advanced design and technology • Aluminium option available 	<ul style="list-style-type: none"> • Suitable for architecturally important buildings • Commercial • Public sector
R-MER CLAD - Profiled Cladding		<ul style="list-style-type: none"> • Economic • Simple installation • Wide range of colour choices • Multiple finishes and coating available 	<ul style="list-style-type: none"> • Industrial • Warehousing • Commercial • Agricultural
R-MER COMP - Composite Roof Panels		<ul style="list-style-type: none"> • High prefabrication • Quick installation • Contractor friendly • Integrated insulation 	<ul style="list-style-type: none"> • Industrial • Education • Warehousing • Commercial
R-MER COMP - Composite Wall Panels		<ul style="list-style-type: none"> • Enhances external aesthetics • Secret fix system • Choice of profiles, materials and colours 	<ul style="list-style-type: none"> • Industrial • Education • Warehousing • Commercial
R-MER TILE COMP - Composite Roof Tile		<ul style="list-style-type: none"> • Traditional tile profile • High prefabrication • Quick installation • Contractor friendly • Integrated insulation 	<ul style="list-style-type: none"> • Industrial • Education • Warehousing • Commercial
R-MER TILE ST - Metal Roof Tiles		<ul style="list-style-type: none"> • Traditional tile replacement • Faster installation • Durable and wind resistant • 20+20 year guarantee • Anti-vandal option 	<ul style="list-style-type: none"> • Education • Residential • Heritage • Conservation

Single-Point Guarantee	Thermal Performance	Acoustic Performance	Sustainability
<ul style="list-style-type: none"> Up to 30 year Single-Point Guarantee covering the specification, system and installation (steel - 20 years, aluminium - 30 years) 			<ul style="list-style-type: none"> Manufactured from up to 55% recycled material Fully recyclable
<ul style="list-style-type: none"> 20 year Single-Point Guarantee covering the specification, system and installation 			<ul style="list-style-type: none"> Manufactured from up to 24% recycled material Fully recyclable
<ul style="list-style-type: none"> 20 year Single-Point Guarantee covering the specification, system and installation 			<ul style="list-style-type: none"> Manufactured from up to 24% recycled material
<ul style="list-style-type: none"> 20 year Single-Point Guarantee covering the specification, system and installation 		<p>N/A</p>	<ul style="list-style-type: none"> Manufactured from up to 24% recycled material
<ul style="list-style-type: none"> 20 year Single-Point Guarantee covering the specification, system and installation 			<ul style="list-style-type: none"> Manufactured from up to 24% recycled material
<ul style="list-style-type: none"> 20 year Single-Point Guarantee covering the specification, system and installation, followed by an additional 20 year diminishing guarantee. 			<ul style="list-style-type: none"> Manufactured from up to 25% recycled material Fully recyclable

R-MER LOC Standing Seam

Innovative design, long-term protection



The R-MER LOC system is acclaimed for its innovative clip connection and unique sliding seam system. R-MER LOC combines watertight integrity and intelligent design to give our customers the most comprehensive range of functional and aesthetic design freedom.

Capable of supporting the most complex designs, including tapered convex roofs and profiles as low as 1.5°, the secret fix system can be engineered from steel, zinc, copper or aluminium to provide a long-lasting and reduced maintenance solution for a wide range of waterproofing applications. R-MER LOC panels are available in a selection of durable RAL coatings and special surface finishes such as stucco embossed to completely transform the look of your building.

R-MER LOC has a range of roofing accessories, including PV panel systems, walkway or access systems, fall arrest systems, snow guard protection, and green roof options. As a fully self-supporting system, R-MER LOC is walk-able allowing for easy maintenance and access to building services.

The build-up versatility of the R-MER LOC system allows for improvements in thermal performance, acoustic requirements and fire standards, making it one of the most durable and long-lasting waterproofing options on the market.

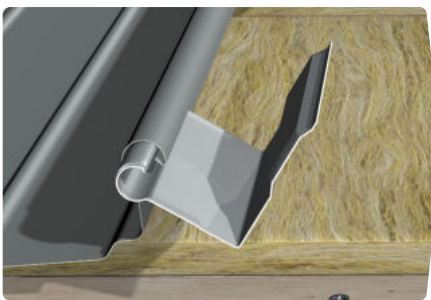
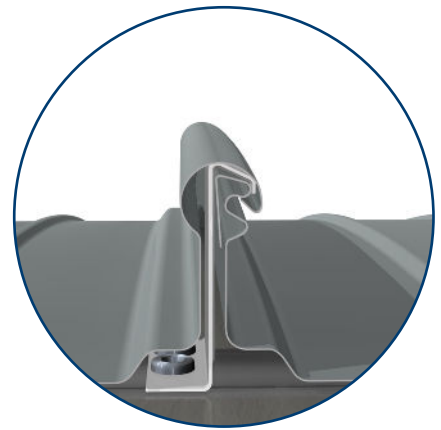
Features:

- ✓ Up to 30 year Single-Point Guarantee
- ✓ Innovative zip-free seam design
- ✓ Manufactured from 55% recycled materials
- ✓ 100% recyclable system
- ✓ Rapid installation
- ✓ Wide range of colours and materials
- ✓ Bespoke tapered and curved profiles
- ✓ Fully compatible with Solarise PV and Green Shield green roof systems

Innovative 'zip' free seam and clip system

The unique clip design allows for rapid installation by removing the need to set-out large areas of mounting points. The sliding clip is directly installed to the roof substructure at the same time as the R-MER LOC panel is installed. In addition to securing each panel, the clip design allows for contraction and expansion of the completed roof system eliminating common issues with other 'zipped' standing seam systems such as buckling, oil-canning and tension splits.

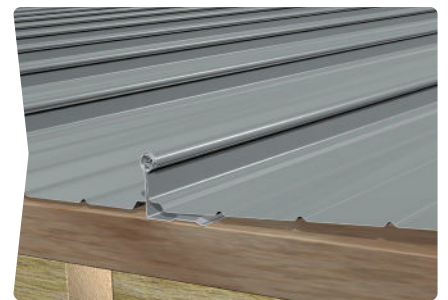
By installing the clips in conjunction with the outer weathering sheet, any common setting-out errors are eliminated as the R-MER LOC panel determines the exact position of the clip.



1. Fix clip to roof structure



2. Insert panel into clip

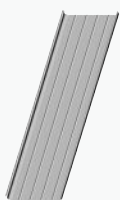


3. Drop panel to lock into position

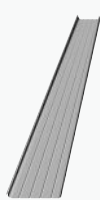
Freedom of design

The R-MER LOC standing seam system is a favourite amongst building designers and architects thanks to the flexibility of the profiled sheets.

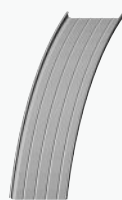
Available in straight, tapered, curved profiles R-MER LOC can be produced with unlimited lengths for optional on-site roll forming, allowing for even the most complex roofing profiles and designs to be achievable.



Straight



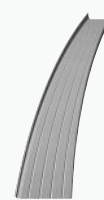
Tapered



Convex curved



Concave curved



Tapered convex curved



Tapered concave curved

R-MER CLAD

Lightweight trapezoidal roof and wall profiles



R-MER CLAD trapezoidal roofing and wall profiles are cost-effective, lightweight and efficient waterproofing systems. Suitable for refurbishment and new build projects, R-MER CLAD can be installed rapidly as a single-skin or a twin-skin insulated build-up to improve the thermal performance of your building.

Cladding provides effective low maintenance and an attractive finish for your building assets horizontally or vertically, as forward or reverse profiles. R-MER CLAD is a complete building envelope solution suitable for roofing applications with pitches greater than 5 degrees. With numerous profiles to choose from, the R-MER CLAD system can be matched to existing metal roof panels and can often be installed to the existing sub-structure, reducing costs and extended disruption to your business. In addition, R-MER CLAD is the perfect solution for overlaying failed asbestos roof panels, mitigating the risk of exposure to harmful materials and reducing waste to landfill.

As part of a refurbishment or new-build project, R-MER CLAD can help achieve your building's target U-Value and acoustic requirements, thanks to its flexible twin-skin construction as a built-up system.

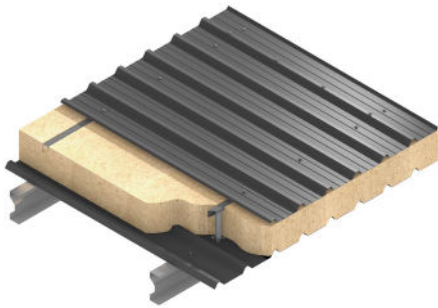
All R-MER CLAD profiles are available in a choice of hard wearing coatings depending on the environment of your project. These include polyester, plastisol and HPS200 Ultra®.

Features:

- ✓ Simple installation with low maintenance
- ✓ Excellent thermal performance
- ✓ Comprehensive range of profiles and looks
- ✓ Made with recycled material
- ✓ Garland Solarise PV compatible
- ✓ 100% Recyclable
- ✓ 20 year Single-Point Guarantee

Single-skin applications

R-MER CLAD profiles can be used in single-skin application where insulation is not required, such as warehousing and industrial units. The profiles can be installed with a anti-condensation 'Drip-Stop' fleece on the lower side to manage condensation. Your Technical Manager is on hand to assist with all aspects of your metal roofing design.



Twin-skin systems

R-MER CLAD can be utilised as a twin-skin built-up system to allow for insulation to improve the thermal performance of your building. In addition to excellent thermal performance, built-up systems also offer excellent acoustic properties.

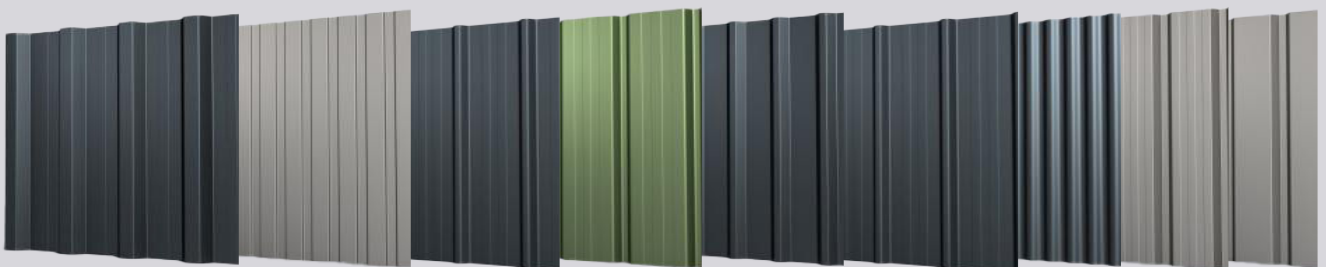


Wall cladding

R-MER CLAD profiles offer great versatility and can be utilised for both roofing and wall applications in either vertical or horizontal orientation. Cladding provides an efficient, low maintenance and attractive finish for industrial, commercial and residential applications.

Wide range of profiles

We offer a wide range of profiles for both wall and roof applications suitable for all type of cladding including commercial, residential and industrial projects.



R-MER COMP

Composite metal panels for the ultimate thermal performance and speed



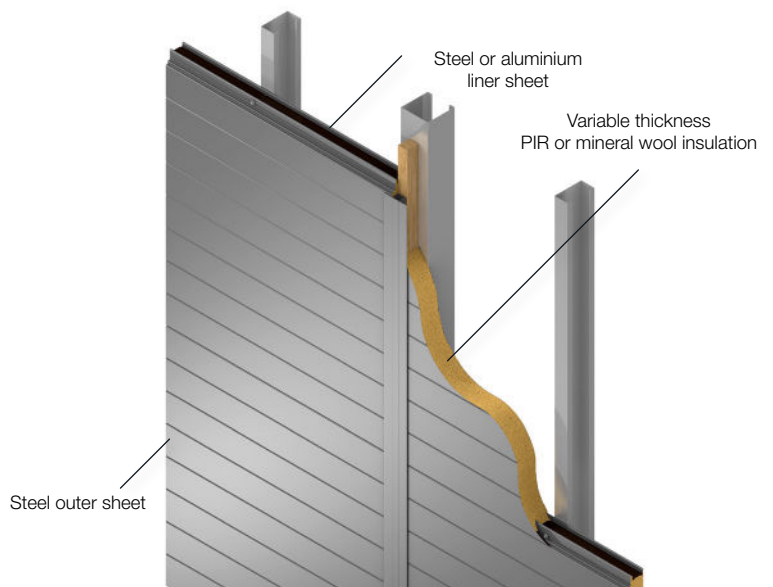
Features:

- ✓ Available for roof and wall applications
- ✓ Wide range of insulation thickness's
- ✓ PIR and mineral wool insulation
- ✓ Compatible with Garland Solarise PV systems
- ✓ Green Guide A+ rating
- ✓ Made with recycled materials
- ✓ Prefabricated for faster installation
- ✓ 20 year Single-Point Guarantee

Composite systems provide an all in one waterproofing solution, with a variable thickness of high-performance insulation encapsulated between an outer weathering sheet and a metal lining profile in a pre-assembled unit. Off-site prefabrication allows for rapid installation of the system.

With a choice of PIR or mineral wool insulation in multiple thicknesses, the thermal efficiency of your building can be greatly improved through the installation of an R-MER COMPOSITE waterproofing system. The system is suitable for a wide range of applications including:

- New build
- Refurbishment
- Overlay including asbestos encapsulation
- Traditional tile roof replacement



Roof systems

The R-MER COMP roof panel system is a through fix external waterproofing solution suitable for all building types with a minimum pitch of 4°.

With a significant degree of prefabrication, the roofing system is installed efficiently and quickly without the need for multiple layers like a traditional twin-skin system. Utilising a PIR insulation core provides greater thermal efficiency whilst allowing for minimal build up height.

The trapezoidal outer sheet allows for external services such as Garland's Solarise PV panels to be installed without compromising on the waterproofing performance of the system.



Wall systems

The composite wall panel system offers a secret fix solution to enhance the thermal performance of your building whilst providing architectural design freedom, through a choice of profiles including smooth and micro-rib panels. Combining vertical and horizontal profiles in a wide choice of colours can completely transform the external look of your building.

Unique designs can be achieved such as integrating buildings with their surroundings by using a gradient colour scheme for each row of panels.



Tile systems

The R-MER COMP tile panel offers a fully PIR insulated tile combining the aesthetics of traditional tiles with the high-performance thermal properties of a PIR insulated roofing panel. Suitable for domestic, agricultural and commercial applications with a minimum pitch of 8°. Composite metal tile systems offer trafficable surfaces allowing for easier maintenance compared with traditional clay tiles.

The composite tile system is suitable as a traditional tile alternative for both new build and refurbishment projects.



R-MER TILE ST

High-performance metal tile system



Features:

- ✓ Rapid installation compared with traditional roofing tiles
- ✓ Highly durable - heat and freeze thaw resistance
- ✓ Suitable for roof or wall application as low as 10°
- ✓ Storm-proof - wind resistant up to 100mph
- ✓ Lightweight - up to 70% lighter than clay
- ✓ Exceptional fire resistance
- ✓ 6 profiles in a wide range of colours
- ✓ Made from 25% recycled steel and fully recyclable
- ✓ 20+20 Year Single-Point Guarantee

The R-MER TILE ST system combines the classic aesthetics of a traditional tile, with the high-performance characteristics of steel.

Ideal for complete roofing restoration or new-build projects, R-MER TILE ST is a mechanically fixed lightweight alternative that can be installed on tiling battens is often used as a replacement for traditional clay tiles.

With minimal to no maintenance required, R-MER TILE ST is also incredibly simple to install and is 30% faster than traditional tile installations. The overall carbon footprint of the system is dramatically reduced, thanks to its 100% recyclable qualities and long-term lifespan.



Applications



Conservation

The range of R-MER TILE ST colours and profiles makes the system a popular choice for conservation projects. Suitable for heritage buildings and listed sites, R-MER TILE ST complies with a series of planning stipulations, matching the aesthetics of traditional tile, whilst improving the building's overall thermal performance.



Flat to pitched

Completely transforming the look of a building, R-MER TILE ST can be used in flat to pitched roof conversions. The installation of a pitched metal frame provides extra space in the roof cavity, increasing usable space or to improve a building's thermal performance with additional insulation.



Asbestos replacement

R-MER TILE ST is the perfect choice to replace failed asbestos roof panels. The lightweight design can be installed directly to the existing roof structure, minimising disruption and restoring waterproofing quickly.

30%

FASTER INSTALLATION

Unlike traditional tile systems which require individual fixings, TILE ST profiles are manufactured in large sheets mechanically fixed to timber battens. This method allows for a faster more secure installation.



Profiles for any project

Whether you are replacing traditional roofing tiles or looking to make a statement, we have the largest range of profiles available in a broad range of colours to suit your needs.

Ripple



British



Stepped



British



Mediterranean



Traditional



Garland's Single-Point Guarantee

Our Single-Point Guarantee gives you complete peace of mind, with no hidden surprises.

Garland UK is a 100% employee-owned subsidiary of Garland Industries and we are one of the oldest and most financially stable manufacturers in the construction industry.

We believe that the best guarantee for your roof is not just the certificate but the process that ensures its performance for the future. Unlike other roofing manufacturers, a single call to your dedicated Technical Manager is all you need to do, and we take care of the rest.

Included in every Garland specification:

- ✓ Design & specification, system, installation by a Garland Approved Contractor
- ✓ We take 100% ownership of any issues for the duration of the guarantee
- ✓ Complete peace of mind
- ✓ Efficient resolution of any faults
- ✓ Up to 30 years coverage

R-MER system guarantees

Garland Waterproofing System	System Type	Single-Point Guarantee Length
R-MER LOC (Aluminium)	Standing Seam Metal	30 Years
R-MER TILE ST	Metal Tile	20+20 Years*
R-MER CLAD (Steel)	Metal Cladding	20 Years
R-MER LOC (Steel)	Standing Seam Metal	20 Years
R-MER COMP	Metal Composite	20 Years

*R-MER TILE ST 20 year Single-Point Guarantee, followed by an additional 20 year diminishing guarantee.

Learn more about how we protect your assets with our industry-leading Single-Point Guarantee>



SINGLE-POINT
GUARANTEE



Materials, Colours & Finishes

Durable, long-lasting finishes available across the entire R-MER metal range

With R-MER, you decide which metal, surface or colour finish is suitable for your building without any restrictions. Available in a wide range of RAL colour coatings, our range of R-MER finishes meet the highest requirements for weather and corrosion resistance.

Materials & coatings

With a range of natural finishes, self-cleaning and refined materials available, the choice in the R-MER range ensures that the most suitable metal material is selected for your building.

Steel

HPS 200 Ultra® - 200µ

Designed to withstand the harshest of environments, HPS 200 Ultra® pre-finished steel provides the ultimate durability and protection against corrosion, suitable for industrial and marine applications.

Granite® HDXtreme - 75µ

Granite® HDXtreme protects against UV damage and corrosion whilst providing a more sustainable alternative to plastisol coatings reducing the CO² impact of your project.

Plastisol - 200µ

Leather-grain plastisol provides an high-performance coating at an affordable price. Plastisol provides excellent colour stability and retention but also protects the steel from corrosion.

Polyester - 25µ

Our most cost effective steel coating suitable for a wide range of roof and wall applications in undemanding environments.

Aluminium



Available in either 0.7, 0.9 or 1.0mm thicknesses. Available in a mill finish, stucco-embossed or colour coated to provide a long-lasting, low weight, corrosion resistant metal waterproofing system.

Zinc



Available in either 0.7 or 1.0mm thicknesses with either a aluminium or titanium finish. This surface delivers a highly resistant solution.

Copper



Copper delivers the ultimate aesthetic for your building envelope which develops over time as the surface layer oxidises. This protects the inner core giving an extremely long lifespan for the system.

R-MER systems colour palette

Our range of metal waterproofing systems are available in a wide selection of RAL colours to match your existing building, brand colours or to suit your aesthetic requirements.





Installed by expertly trained and approved PV contractors, Garland UK will oversee the project management of your Solarise installation from the initial roofing survey through to maintenance and aftercare.

Industry leading service

As a partner for the life of your building, our Technical Managers work tirelessly to provide expert advice and support services.

We are committed to raising standards in the industry, and work closely with you to ensure your project delivers on its environmental initiatives.

PartnerCare

Giving you long-term confidence in a Garland system, PartnerCare takes the unknowns out of your roofing project, delivering market-leading support and solutions through your expert local Technical Manager.

[Read more >](#)



Why choose Garland?

- ✓ Protected against design, system and installation liability
- ✓ Garland UK take 100% ownership of any issue with your roof system
- ✓ Provides you the customer with complete peace of mind
- ✓ Simple and direct process to rectify any issues

Bespoke specifications

A tailored R-MER solution that is specific to your needs. Our Technical Managers work with you, to provide a custom specification that perfectly matches your building's particular requirements and budget.

Technical expertise

Our Technical Managers have the detailed knowledge and expertise to manage your R-MER metal project, giving you the confidence that your building is in a safe pair of hands every step of the way.



Case Study

Alderley Park Technology Centre

Triple-pitched standing seam roof system for new innovation hub

Home to over 200 businesses, Alderley Park's Science and Innovation Campus is a diverse hub for contemporary office spaces and forward-thinking companies looking to collaborate and grow together.

Garland UK was the specialist roofing partner for the project, with a mix of new-build and existing roof refurbishments required across the multi-building site. As part of the project, Garland UK created a tailored design specification for the Glasshouse Project, a brand new 2,800 sqm glass and metal atrium, one of the largest triple pitched standing seam roofs in the UK.

The R-MER LOC standing seam metal system was the perfect choice for the new atrium specification, thanks to the greater design flexibility to accommodate numerous actuated rooflights and siphonic drainage.

R-MER LOC seams are not zipped, allowing free movement during thermal expansion between the profiles. The clips which hold the LOC sheet to the roof are easily clipped in by hand as the roof install progresses, ensuring accuracy, precision and minimal stress on the profiles during installation.

Expertly manufactured and cut to size off-site, the R-MER LOC profiles were finished with a 0.9mm stucco-embossed aluminium to bring the architect's building designs to life. Expertly installed by Garland approved contractors, the system design included easy roof access and safe walkways to support the cleaning duties of the maintenance staff in the future.

The client was delighted with the quality, ease and speed of the installation of the R-MER system, which was able to turn initial concepts into reality. The impressive triple pitched standing seam roof is now used by over 2,000 people as an aesthetically unique space to work in, befitting from the innovative and creative advancements taking place at Alderley Park.





“

The R-MER LOC system is quick and simple to lay providing an aesthetically pleasing finish. I would choose it every time.

Matthew Davie
Director, Gemini Roofing & Cladding Ltd



Contact your local expert today.

Our Technical Managers are on hand to assist and provide technical advice on your building envelope and roofing systems.



contact@garlanduk.com



01174 401050



garlanduk.com