

R-MER COMPOSITE Roof System - PIR Core				
Core Thickness	Overall Thickness	U-Value (W/m ² K)	Weight (kg/m ²)	Rw (dB)
40mm	85mm	0.46	11.71	24
60mm	105mm	0.35	12.51	24
80mm	125mm	0.25	13.30	25
100mm	145mm	0.20	14.10	26
120mm	165mm	0.16	14.89	26
150mm	195mm	0.14	16.09	27

U-Values are calculated in accordance with the method required by Part L2 (England and Wales) Building Regulations and Section 6 (Scotland)

Maximum Recommended Span Length			
Core Thickness	Single Span	Double Span	Multiple Span
40mm	1.88	1.88	1.88
60mm	2.21	2.21	2.21
80mm	2.50	2.28	2.50
100mm	2.70	2.24	2.53
120mm	2.80	2.29	2.58
150mm	2.92	2.34	2.61

Recommended span length based on 2.00 KN/m² - assumptions of span/load table must be taken into account

Minimum recommended pitch 4°

SITE:

DRAWING NO.

PROJECT NO.

09/08/2020

DATE.



The Garland Company UK Limited
 Second Way, Avonmouth, Bristol, BS11 8DF
 Tel: 01174 401050 Fax: 01174 401057
 www.garlandukltd.co.uk

TITLE:

R-MER COMPOSITE ROOF SYSTEM

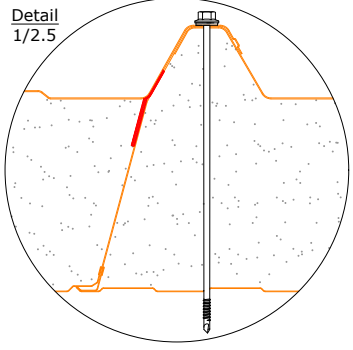
NTS
 SCALE AT A4.

MF
 DRAWN.

-
 CHECKED.

1.0
 REVISION.

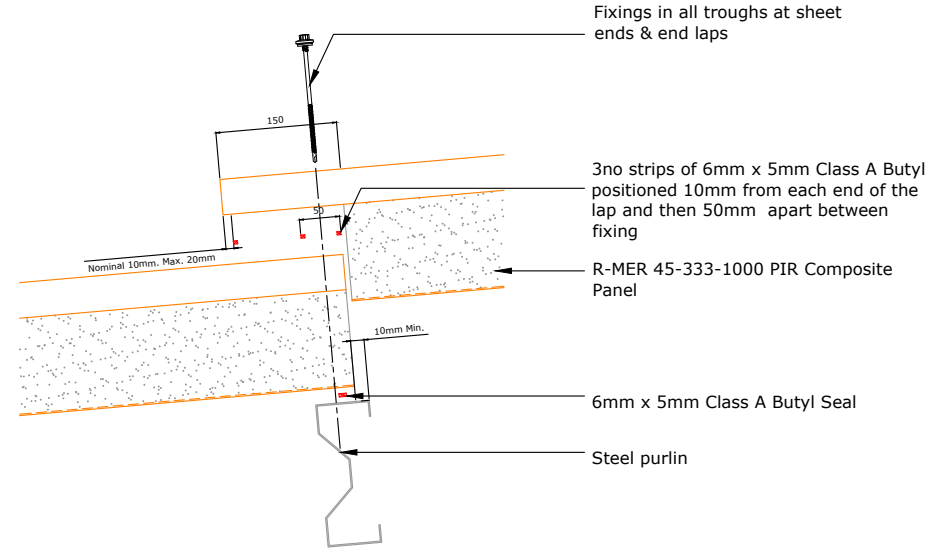
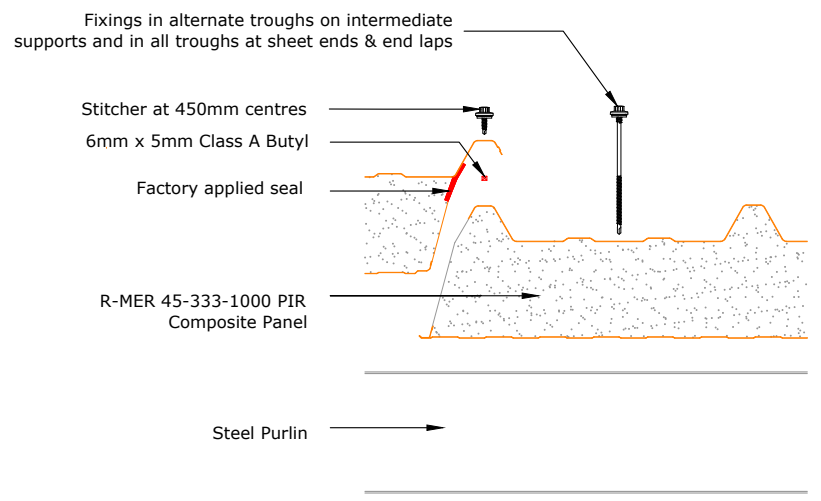
NOTE: THIS DRAWING IS FOR GUIDANCE AND REFERENCE ONLY.
 TO BE USED IN CONJUNCTION WITH SPECIFICATION.




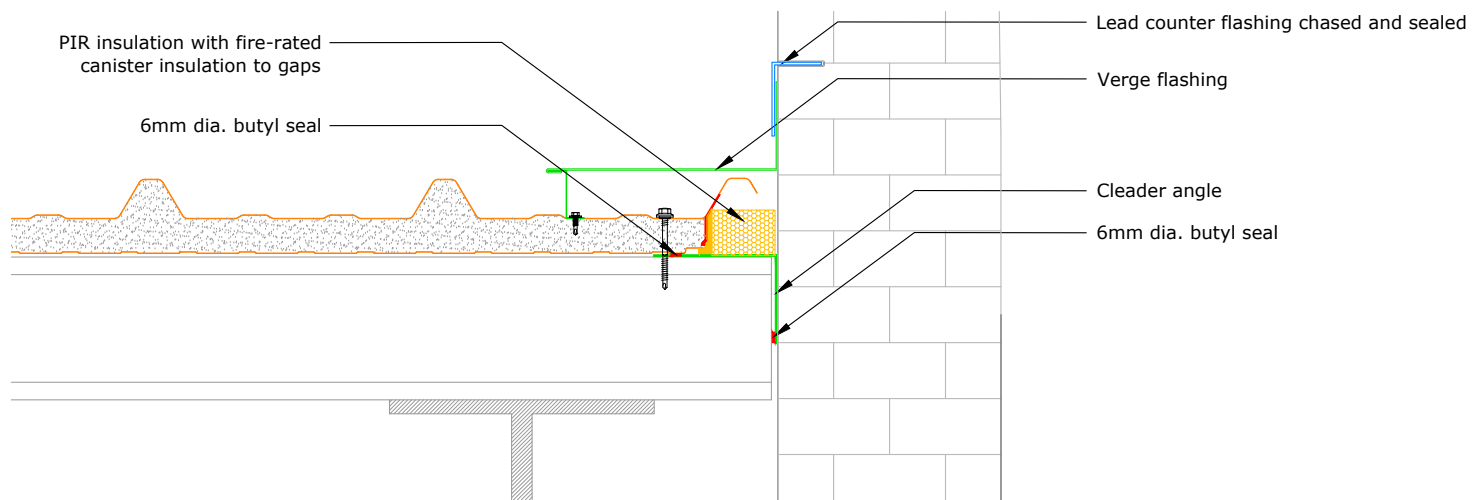
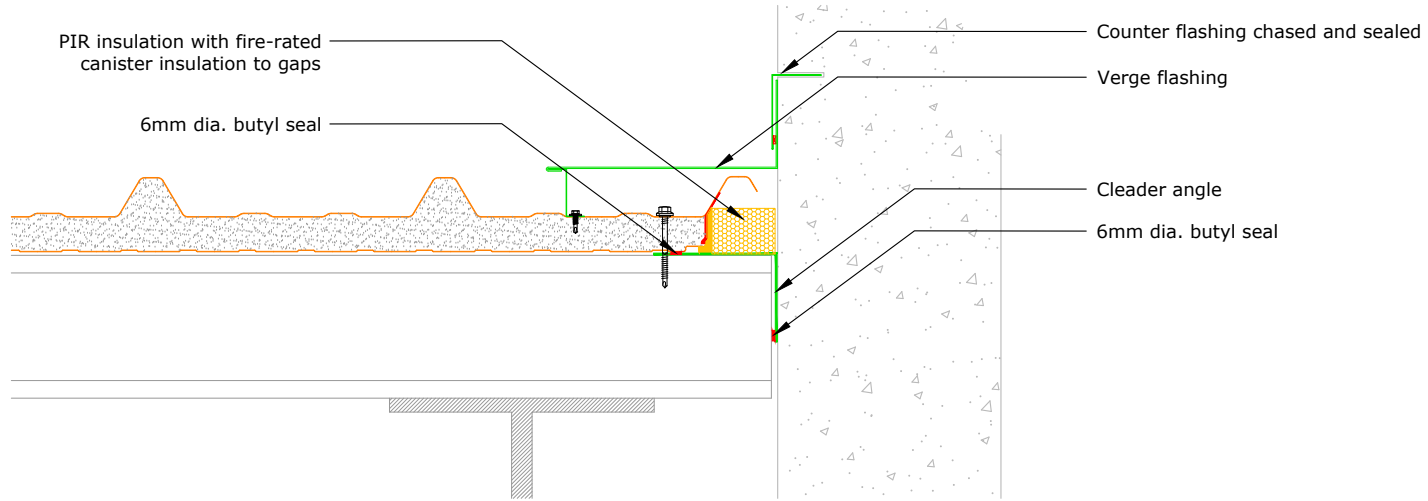
R-MER COMPOSITE ROOF SYSTEM SIDE LAP DETAIL


R-MER COMPOSITE ROOF SYSTEM END LAP DETAIL

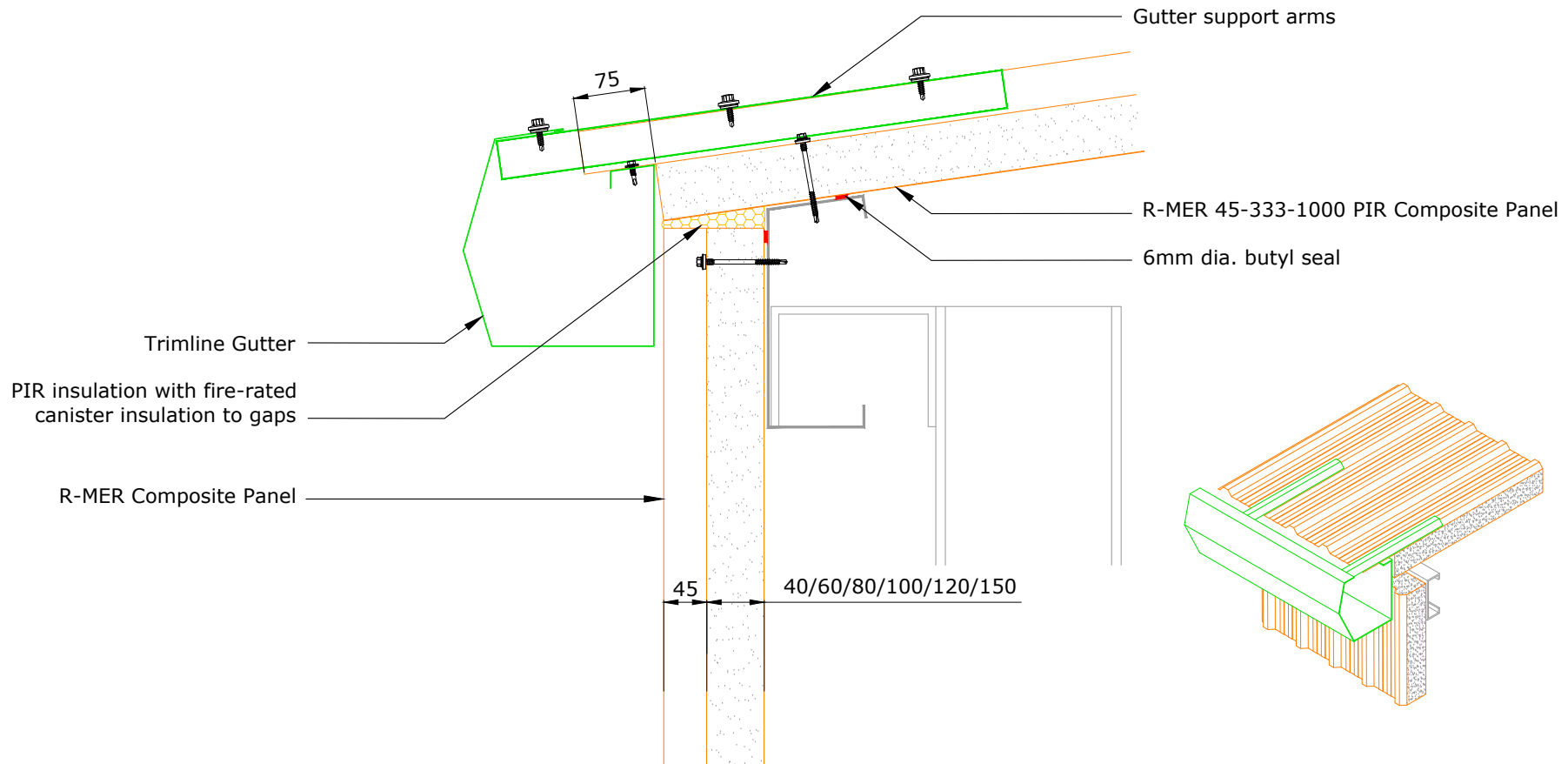
Direction of prevailing wind →
 ← Direction of lay




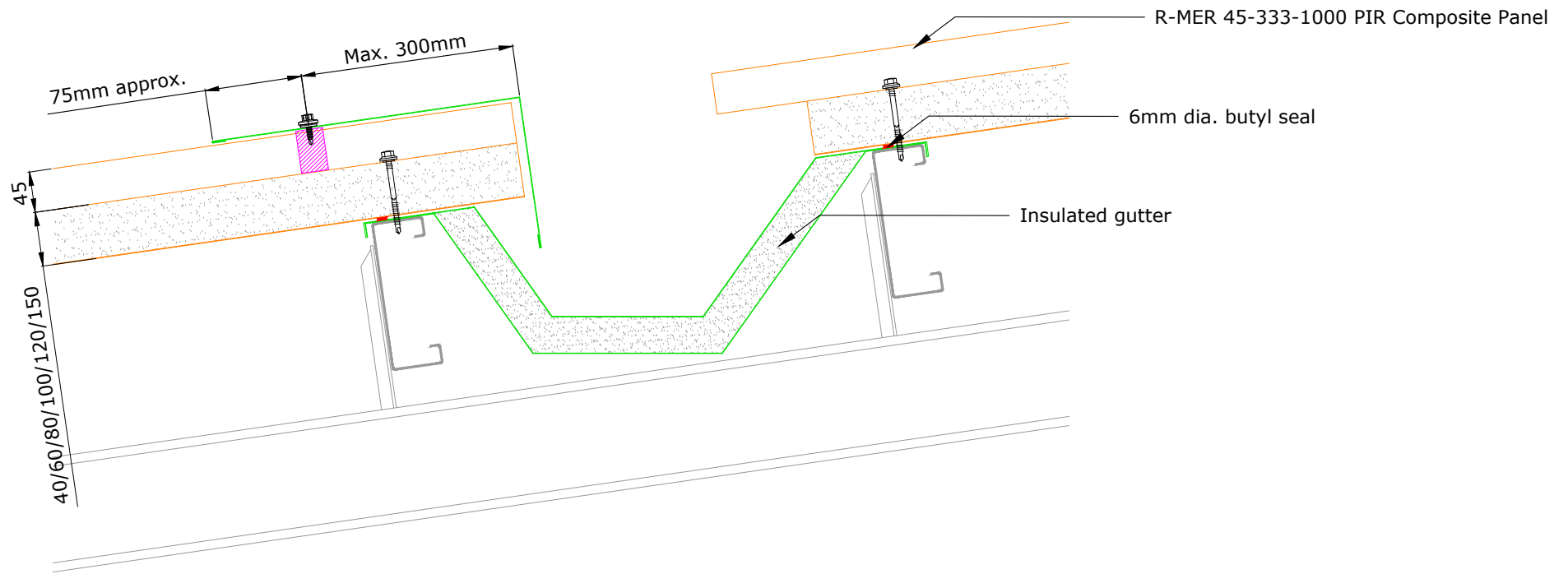
SITE:		DRAWING NO.		-	09/08/2020		The Garland Company UK Limited Second Way, Avonmouth, Bristol, BS11 8DF Tel: 01174 401050 Fax: 01174 401057 www.garlandukltd.co.uk
TITLE: R-MER COMPOSITE ROOF SYSTEM - EXPLODED		NTS SCALE AT A4.	MF DRAWN.	- CHECKED.	1.0 REVISION.		




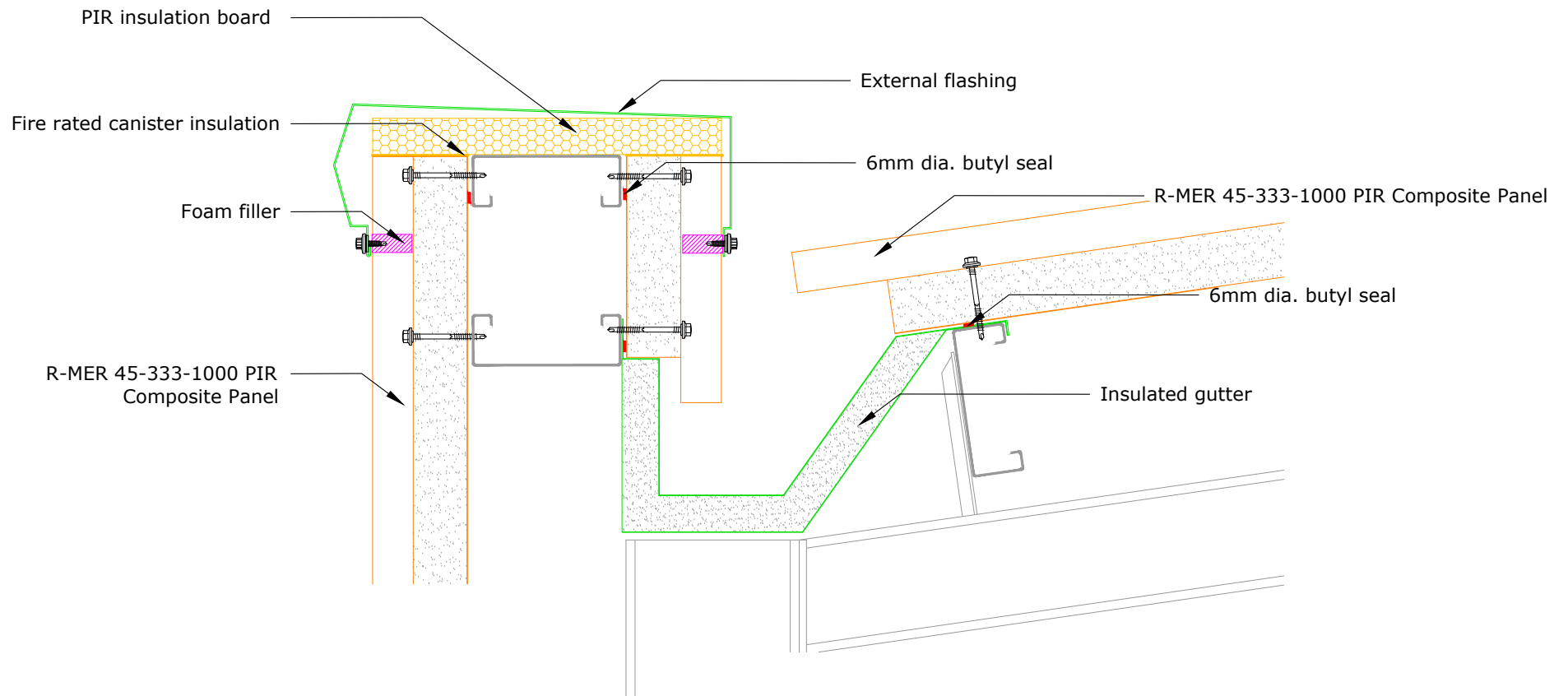
SITE:	DRAWING NO.	-	PROJECT NO.	21/10/2020		The Garland Company UK Limited Second Way, Avonmouth, Bristol, BS11 8DF Tel: 01174 401050 Fax: 01174 401057 www.garlandukltd.co.uk
TITLE: R-MER COMPOSITE ROOF SYSTEM - ABUTMENT WALL	NTS SCALE AT A4.	MF DRAWN.	-	1.0 REVISION.		




SITE:	DRAWING NO.		-	09/09/2020		The Garland Company UK Limited Second Way, Avonmouth, Bristol, BS11 8DF Tel: 01174 401050 Fax: 01174 401057 www.garlandukltd.co.uk
TITLE: R-MER COMPOSITE ROOF SYSTEM - EAVES GUTTER	NTS SCALE AT A4.	MF DRAWN.	-	1.0 REVISION.		NOTE: THIS DRAWING IS FOR GUIDANCE AND REFERENCE ONLY. TO BE USED IN CONJUNCTION WITH SPECIFICATION.



SITE:		DRAWING NO.		-	09/09/2020		The Garland Company UK Limited Second Way, Avonmouth, Bristol, BS11 8DF Tel: 01174 401050 Fax: 01174 401057 www.garlandukltd.co.uk
TITLE: R-MER COMPOSITE ROOF SYSTEM - SECRET GUTTER		NTS SCALE AT A4.	MF DRAWN.	- CHECKED.	1.0 REVISION.		



SITE:	DRAWING NO.	-	PROJECT NO.	09/09/2020 DATE.	 <p>The Garland Company UK Limited Second Way, Avonmouth, Bristol, BS11 8DF Tel: 01174 401050 Fax: 01174 401057 www.garlandukltd.co.uk</p>
TITLE: R-MER COMPOSITE ROOF SYSTEM - PARAPET GUTTER	NTS SCALE AT A4.	MF DRAWN.	- CHECKED.	1.0 REVISION.	

R-MER 45-333-1000 PIR Composite Panel

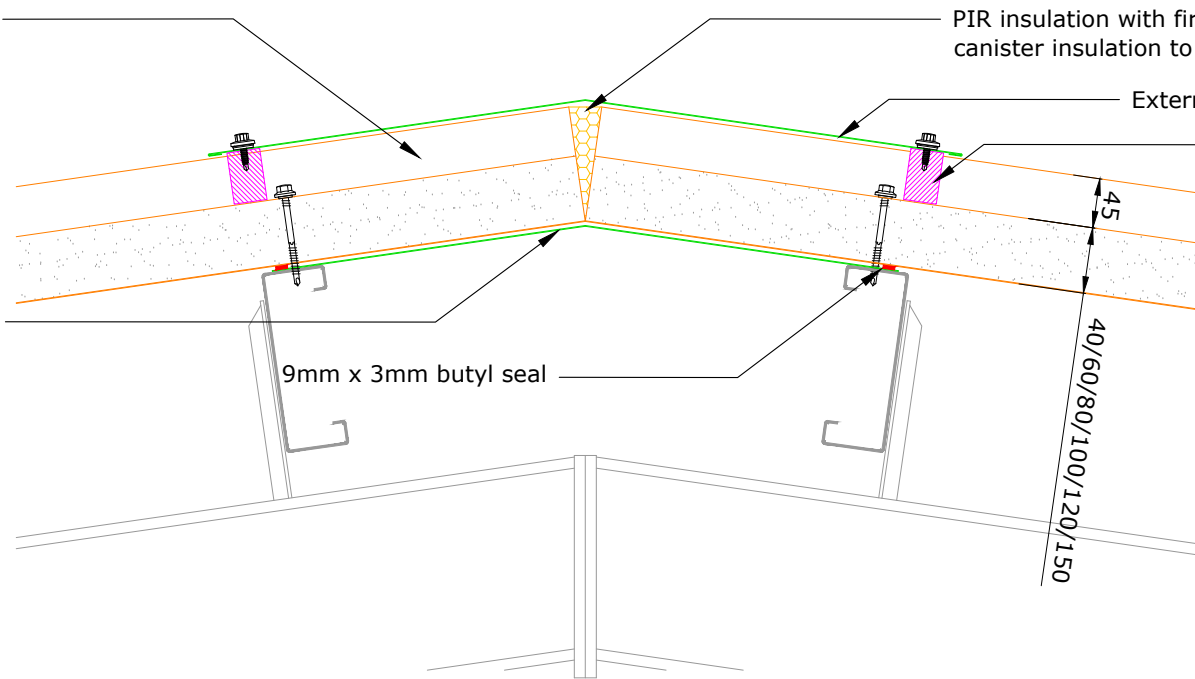
PIR insulation with fire-rated canister insulation to gaps

External ridge flashing

Foam filler

Internal ridge flashing with 150mm overlap and air sealed

9mm x 3mm butyl seal



SITE:

DRAWING NO.

PROJECT NO.

09/09/2020

DATE.



The Garland Company UK Limited
 Second Way, Avonmouth, Bristol, BS11 8DF
 Tel: 01174 401050 Fax: 01174 401057
 www.garlandukltd.co.uk

TITLE:

R-MER COMPOSITE ROOF SYSTEM - RIDGE

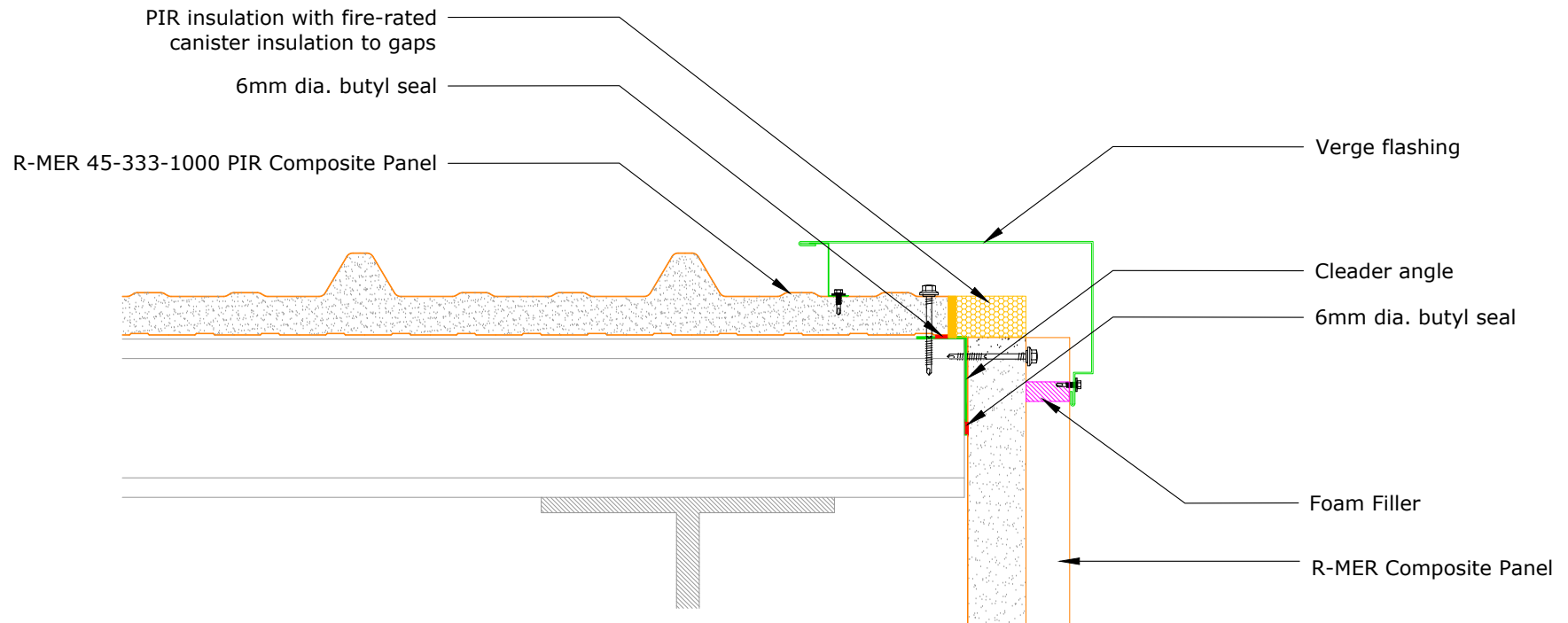
NTS
 SCALE AT A4.


MF
 DRAWN.

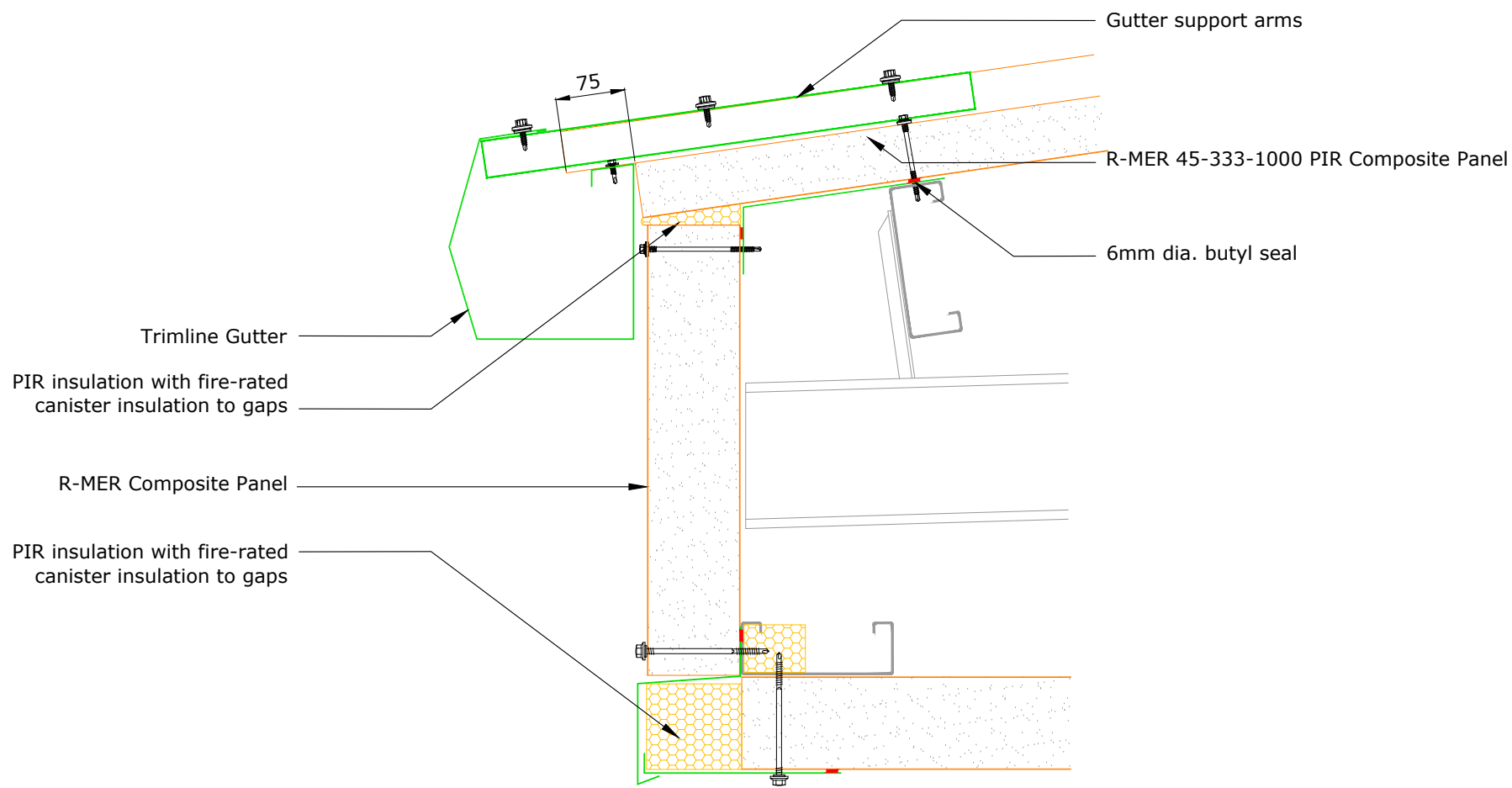
-
 CHECKED.


1.0
 REVISION.

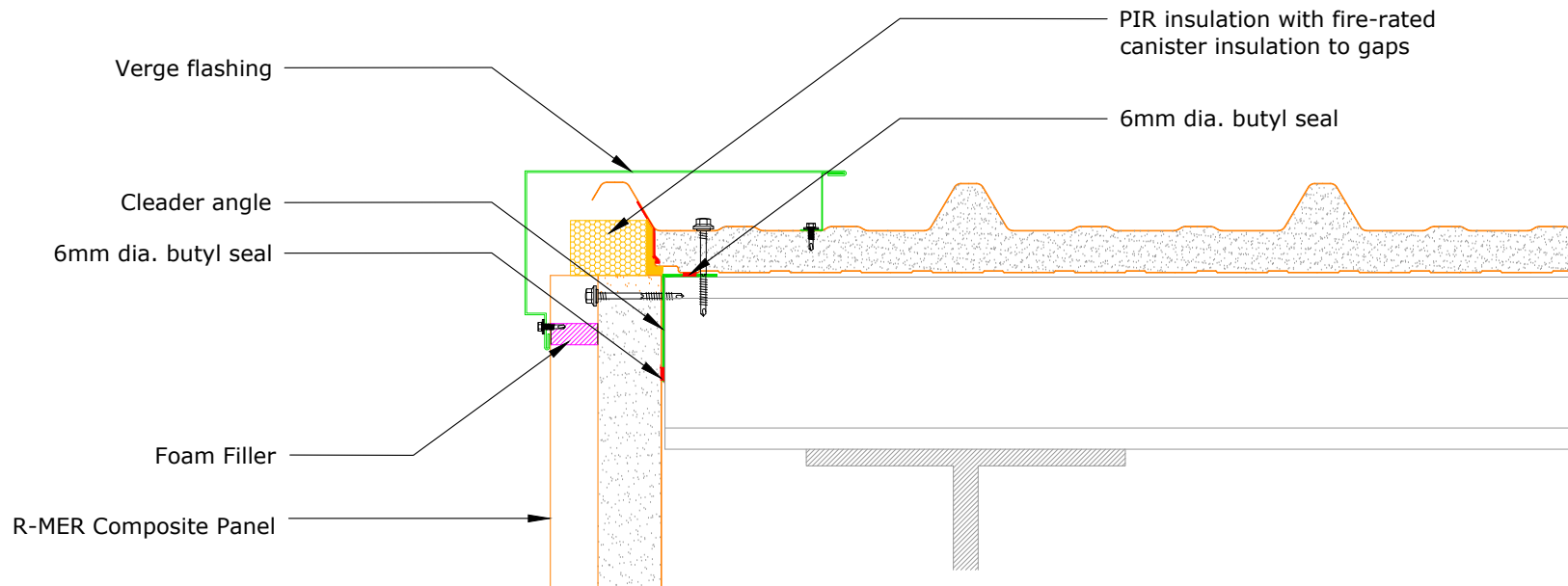
NOTE: THIS DRAWING IS FOR GUIDANCE AND REFERENCE ONLY.
 TO BE USED IN CONJUNCTION WITH SPECIFICATION.




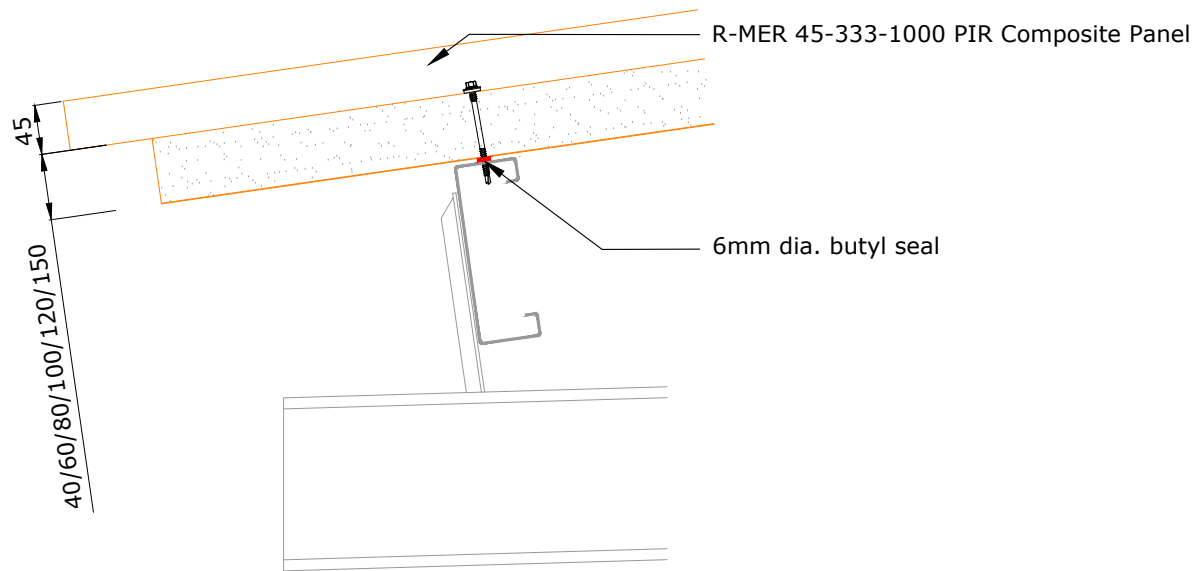
SITE:	DRAWING NO.		- PROJECT NO.	09/09/2020 DATE.		The Garland Company UK Limited Second Way, Avonmouth, Bristol, BS11 8DF Tel: 01174 401050 Fax: 01174 401057 www.garlandukltd.co.uk
TITLE: R-MER COMPOSITE ROOF SYSTEM - VERGE W/CUT PANEL	NTS SCALE AT A4.	MF DRAWN.	- CHECKED.	1.0 REVISION.		




SITE:	DRAWING NO.	-	PROJECT NO.	09/09/2020		The Garland Company UK Limited Second Way, Avonmouth, Bristol, BS11 8DF Tel: 01174 401050 Fax: 01174 401057 www.garlandukltd.co.uk
TITLE: R-MER COMPOSITE ROOF SYSTEM - OVERHANG EAVES	NTS SCALE AT A4.	MF DRAWN.	-	1.0 REVISION.		



SITE:	DRAWING NO.	-	PROJECT NO.	09/09/2020		The Garland Company UK Limited Second Way, Avonmouth, Bristol, BS11 8DF Tel: 01174 401050 Fax: 01174 401057 www.garlandukltd.co.uk
TITLE: R-MER COMPOSITE ROOF SYSTEM - VERGE	NTS SCALE AT A4.	MF DRAWN.	-	1.0 REVISION.		



SITE:	DRAWING NO.		-	09/09/2020		The Garland Company UK Limited Second Way, Avonmouth, Bristol, BS11 8DF Tel: 01174 401050 Fax: 01174 401057 www.garlandukltd.co.uk
TITLE: R-MER COMPOSITE ROOF SYSTEM - OPEN OVERHANG EAVES	NTS SCALE AT A4.	MF DRAWN.	-	1.0 REVISION.		NOTE: THIS DRAWING IS FOR GUIDANCE AND REFERENCE ONLY. TO BE USED IN CONJUNCTION WITH SPECIFICATION.