

R-MER CLAD 33/250/1000 Roof

Technical Data Sheet



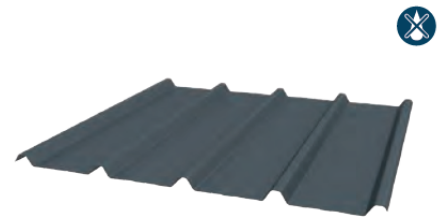
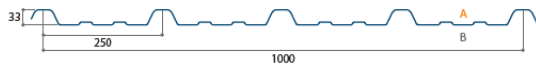
Product Description

The R-Mer Clad 33-250-1000 Roof are economical roof pro-files manufactured from pre-finished steel coil. The 1000mm cover width ensures easy on-site handling and wide pans allowing for careful foot tracking.

The profile will provide a weatherproof membrane down to a 5 degree pitch.

Product Illustrations

Thickness (mm)	Weight (kg/m ²)
0,50	4,79
0,60	5,75
0,70	6,79



Finishes

R-Mer Clad 33/250/1000 Roof is available in a comprehensive range of colours in HPS200 Plastisol and Polyester on galvanised steel grade Zig275N. The profile is available in 0.7mm, 0.6mm and 0.5mm gauge steel. Colour side to be stated when ordered.

Fixing

R-Mer Clad 33/250/1000 Roof is easy to fix and should be secured using self-drilling screws through every corrugation.

For specific application recommendations, please contact your regional Garland Technical Manager or the Garland Technical Department.

Fire Properties

Manufactured from steel, the R-Mer Clad 33/250/1000 Roof is designated as AA to BS-476 Part 3 and is classed under European Standard EN 13501-5 : 2005 at B_{roof} (t4)

Accessories

A full range of accessories including flashings, trims, gutters, fixings, louvres, ridge vents and soakers, GRP translucent roof lights in either single or double skin are also available on request.

For specific design recommendations, please contact your regional Garland Technical Manager for on-site advice.



Garland UK

Second Way Centre, Second Way,
Bristol, BS11 8DF
+44 (0)1174 401050
info@garlandukltd.co.uk
www.garlandukltd.co.uk

Issue date: 25/05/2021

R-MER CLAD 33/250/1000 Roof

Technical Data Sheet



Technical Details:

33/250/1000 Roof Load/ Span Tables –The Span Table provides the ultimate load divided by 1.5 based on a deflection of L/150 (kN/m²)

Pressure

L/200	Thickness (mm)	1.00	1.20	1.40	1.60	1.80	2.00	2.20	2.40	2.60	2.80	3.00
Single	0.50	3.75	2.60	1.91	1.47	1.16						
	0.60	5.07	3.52	2.59	1.98	1.46	1.06					
	0.70	6.16	4.28	3.14	2.41	1.72	1.25					
Double	0.50	3.58	2.60	1.91	1.47	1.16						
	0.60	5.03	3.52	2.59	1.98	1.57	1.27	1.05				
	0.70	6.16	4.28	4.28	3.14	2.41	1.91	1.59	1.36	1.17	1.01	
Multi	0.50	3.75	2.60	1.92	1.56	1.30	1.09					
	0.60	5.07	3.52	2.67	2.16	1.79	1.50	1.28	1.11			
	0.70	6.16	2.46	3.50	2.82	2.32	1.95	1.66	1.39	1.10		

Suction

L/200	Thickness (mm)	1.00	1.20	1.40	1.60	1.80	2.00	2.20	2.40	2.60	2.80	3.00
Single	0.50	4.52	3.14	2.31	1.57	1.1						
	0.60	5.88	4.08	2.32	1.96	1.38	1.00					
	0.70	7.28	5.06	3.52	2.36	1.66	1.21					
Double	0.50	3.75	2.60	1.91	1.47	1.16						
	0.60	5.07	3.52	2.59	1.98	1.57	1.27	1.05				
	0.70	6.16	4.28	3.14	2.41	1.90	1.54	1.27	1.07			
Multi	0.50	4.69	3.26	2.39	1.83	1.45	1.17					
	0.60	6.34	4.40	3.24	2.48	1.96	1.59	1.31	1.10			
	0.70	7.70	5.34	3.93	3.01	2.38	1.92	1.59	1.34	1.06		

If you require any further information please contact your local Garland Technical Manager.

